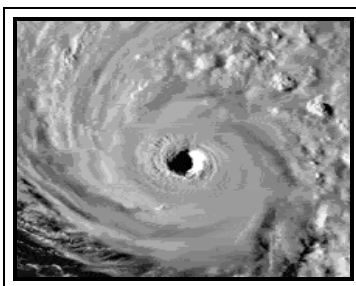


THE WAVE CONDOMINIUM

Hurricane Preparation Package



DEAR RESIDENTS,

Hurricane season begins June 1st and ends November 30th. The coast of South Florida can be threatened at any time during hurricane season. The following information will help you prepare for a hurricane emergency.

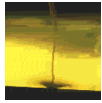
Please take the time to read the following information carefully.

Useful definitions:

- a. **HURRICANE WATCH:** A hurricane or an incipient hurricane condition poses threat, generally within 36 hours.
- b. **HURRICANE WARNING:** Sustained winds of 64kt (74 mph or 119 kph) or higher associated with a hurricane are expected in a specified coastal area within 24 hours or less.
- c. **TROPICAL DEPRESSION:** A tropical depression has winds of less than 39 mph or knots.
- d. **TROPICAL STORM:** A tropical storm has winds from 39 to 73 mph or 34 to 63 knots.
- e. **HURRICANE:** A hurricane has winds greater than 73 mph or 64 knots.

The Wave Condominium is located in a mandatory evacuation zone, which may experience severe flooding during hurricane like conditions due to storm surges.

One major cause of hurricane damage is storm surge. Storm surge is rising water of the sea level due to the low pressure, high winds, and high waves associated with a hurricane as it makes landfall. Storm surge can cause significant flooding and cost people their lives if they're caught unexpected. You may need to evacuate during any category hurricane.



PLAN AHEAD

1. Plan now for a safe destination either further inland or completely out of the anticipated hurricane strike zone. After the first tropical depression advisory, keep your radio or TV set tuned in to your local news station for all further messages from civil defense and the National Weather Service. Purchase all supplies you may need in case of an emergency.



EVACUATION ALTERNATIVES

Plan ahead before a hurricane warning and map out your evacuation route, know your destination, have your clothing and personal belongings packed and ready and be sure to fill up your gas tanks. There should be adequate warning to permit your safe departure before a hurricane strikes. Plan a safe destination; as a last resort go to a Red Cross shelter. If you need any medical care, or need electricity for life support equipment, arrange with your doctor now on how to meet your needs. If you must seek public shelter, listen to the radio and TV for announcements of which shelters will be open. Eat before leaving home and do not go to a shelter until you hear a media announcement stating that it is open.

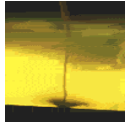


EVACUATION PROCEDURES

Once a call for evacuation has been issued, your management and maintenance team will conclude the procedures to prepare the common areas in the building for the storm. Please note that the management and maintenance team will begin preparations once a Hurricane Watch is issued if not sooner. Please load your vehicle with the needed supplies upon issuance of a hurricane watch. Be sure to place any important documents such as insurance papers in a plastic cover or waterproof container and take them with you.

AVOID FRUSTRATION AND INCONVENIENCE BY BEING PREPARED FOR AN EVACUATION PRIOR TO THE ORDER.

Prior to leaving your home, the following precautions should be observed:



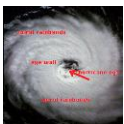
PREPARATION PRIOR TO EVACUATION

1. All furniture and loose objects must be removed from your balcony. Items left on the balcony could be swept away by wind causing injury and property damage.
2. All sliding glass doors must be secured and locked.
3. All shades, blinds, drapes, etc. should be drawn and/or closed.
4. Place folded towels at the bottom of all doors leading to the balcony.
5. All fragile objects and valuable possessions should be removed away from the windows and sliding doors.
6. Check all faucets to determine that they are in a closed position.
7. Be sure that all your appliances are left disconnected.
8. If you are assigned to a parking space in the first level of the garage, plan to remove your vehicle from this location. A vehicle left in the 1st level of the garage will almost certainly suffer damage by water in the event a tidal surge accompanies a hurricane.
9. **Management must have keys to each unit and any vehicles left on the property.** Your unit will be forcibly entered if no key is available in case of an emergency. Re-securing the premises could be delayed if the locksmiths are not available. The unit owners will be responsible for the Locksmith bill.



OUT OF TOWN OR ON VACATION

If you do not reside in the unit during hurricane season, all of the precautions above should be taken prior to your departure for an extended period of time. Make arrangements ahead of time for someone to make emergency preparations. Implement as many precautions as possible before you leave.



PRELIMINARY PRECAUTIONS, WHICH SHOULD BE TAKEN BY ALL RESIDENTS

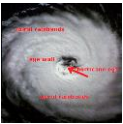
If you need transportation assistance to a public shelter due to a "special need", a physical disability, neurological or psychological disorder register with Broward County's civil defense agency or office of emergency management in advance. Do not wait until the storm approaches to register.

Taking the following precautions before an emergency will help you afterwards when you are permitted to return.



PRECAUTIONARY ACTIVITIES AND BEHAVIOR WHEN A HURRICANE STRIKES.

1. Use your telephone for emergencies only.
2. Turn your refrigerator up to the coldest setting in order to preserve foods as long as possible after the power fails. Avoid unnecessary opening and closing of refrigerator and freezer doors, which will accelerate spoilage.
3. Prepare your emergency water supply before the hurricane strikes. The American Red Cross recommends at least two quarts of drinking water per person per day. Have clean, airtight containers on hand to store at least TWO WEEKS SUPPLY OF DRINKING WATER. Additionally, sterilize the bathtub, jugs, bottles, cooking utensils and other containers. Scrub thoroughly, sponge and swab with bleach, then rinse. Be sure to use regular bleach and not lemon or other scented products. Let the tub and other containers dry, and then fill them with water. This water can be used for sanitary purposes.
4. Tape windows in occupied rooms. Taped windows will not prevent shattering but may reduce flying glass. Keep all windows closed.



AFTER A HURRICANE:

1. You may be required to present proof of residency in order to re-enter evacuation areas. Be sure to carry a driver's license, which indicates your current address.
2. If you are not here when a hurricane strikes, please have a friend or relative available to inspect your unit. The association's staff and management will be preoccupied with restoring the common areas to operating condition; as such, you will not be able to depend on these individuals to inspect your unit for you.
3. The office and maintenance staff will attempt to return to the community within 24 hours after an "all clear" is given.

Your Property Manager, using several sources of information including newspaper articles, the Broward County advisory report and American Red Cross sponsored bulletins has prepared this report to help insure your safety and preparation. Please take all necessary measures and BE SAFE.